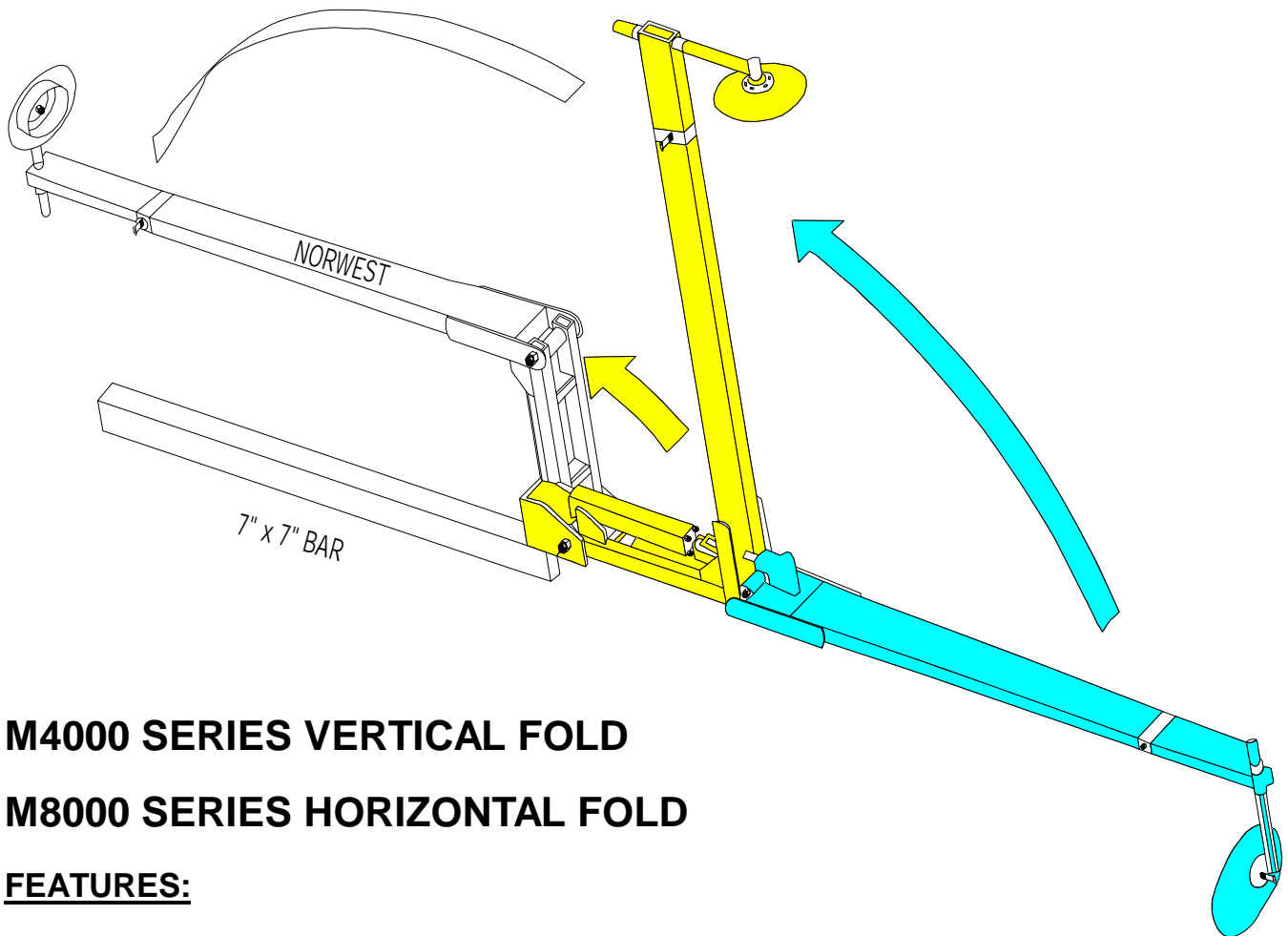


## NORWEST ROW MARKERS



**M4000 SERIES VERTICAL FOLD**

**M8000 SERIES HORIZONTAL FOLD**

**FEATURES:**

- \*Pre-set marking disc
- \*Heavy duty & built to last
- \*Fits all common size tool bars
- \*Comes with two way rams
- \*Comes with pre-set flow control valves

**ROW MARKER- VERTICAL FOLDING**

**M4000-ROW MARKER SERIES: TO ORDER A FULL SET YOU MUST ORDER TWO.**  
 PRICES IN PRICING GUIDE ARE LISTED FOR SINGLE UNITS.

M4000-25	2-1/4" DIAMOND BAR
M4000-40	4" SQUARE BAR
M4000-50	5" SQUARE BAR
M4000-60	6" SQUARE BAR
M4000-70	7" SQUARE BAR

PLEASE SPECIFY TOOL BAR SIZE WHEN ORDERING ROW MARKERS. BRACKETS FIT STANDARD BAR SIZES 2-1/4" DIAMOND, 4", 5", 6", AND 7".

**M4000 PARTS LIST**

REF.	DESCRIPTION	PART NO.	REQ.	REF.	DESCRIPTION	PART NO.	REQ.
1	UPPER EXT. ARM	M1100	1	9	3/4" LOCK WASHER	FLW34	4
2	TOOL BAR BRACKET	M1000	1	10	3/4" HEX NUT	FHN34	4
4	PIVOT ROD	M1600	1	11	CYLINDER PIN	10205	2
5	1/4" X 2" ROLL PIN	G34-RP	2	12	SAFETY PIN	60870	2
6	3/4" X 7" CARRIAGE BOLT	FCB34700G5	4	13	HYDRAULIC CYLINDER	208DB-ASAE	1
7	CLAMP STRAPS			14	HYDRAULIC RESTRICTOR	1404-08-08-R	1
*	2-1/4" DIAMOND BAR	N1	2	15	HYDRAULIC ADAPTER	5502-8-8	1
*	4" STRAPS	M40	2	16	5/8" X 1-1/2" SET SCREW	FSHSS58150	4
*	5" STRAPS	M50	2	29	EXTENSION ARM 40"	M7300	1
*	6" STRAPS	M60	2	*	EXTENSION ARM 60"	M7300E	1
*	7" STRAPS	M70	2	*	EXTENSION ARM 80"	M7300EX	1
8	GREASE FITTING	1610	2	30	MARKER STANDARD	M7400	1

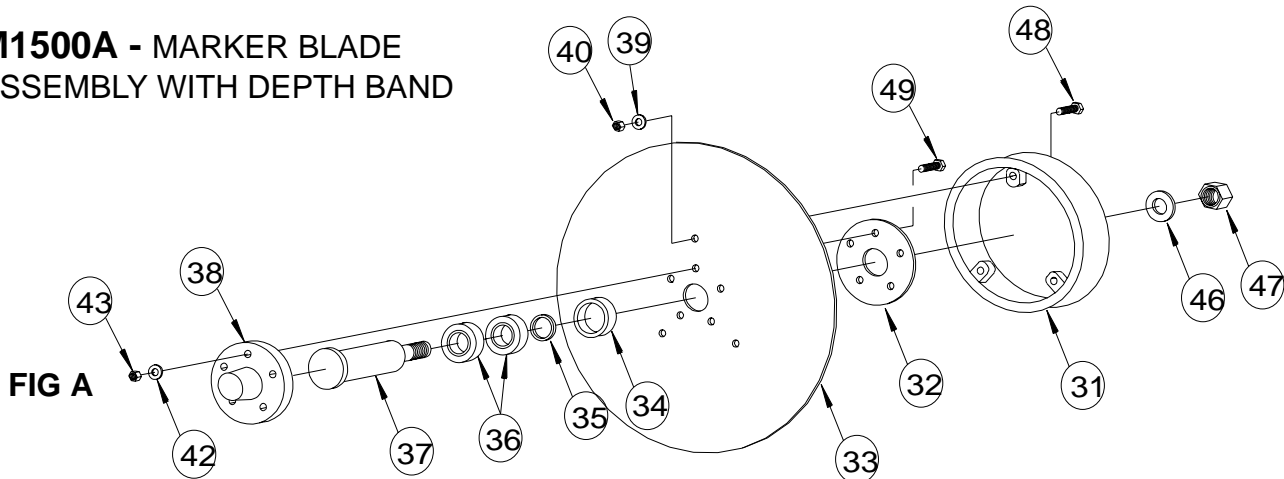
**SUB ASSEMBLIES: SHOWN BELOW**

**M1500A-MARKER BLADE ASSEMBLY WITH DEPTH BAND**

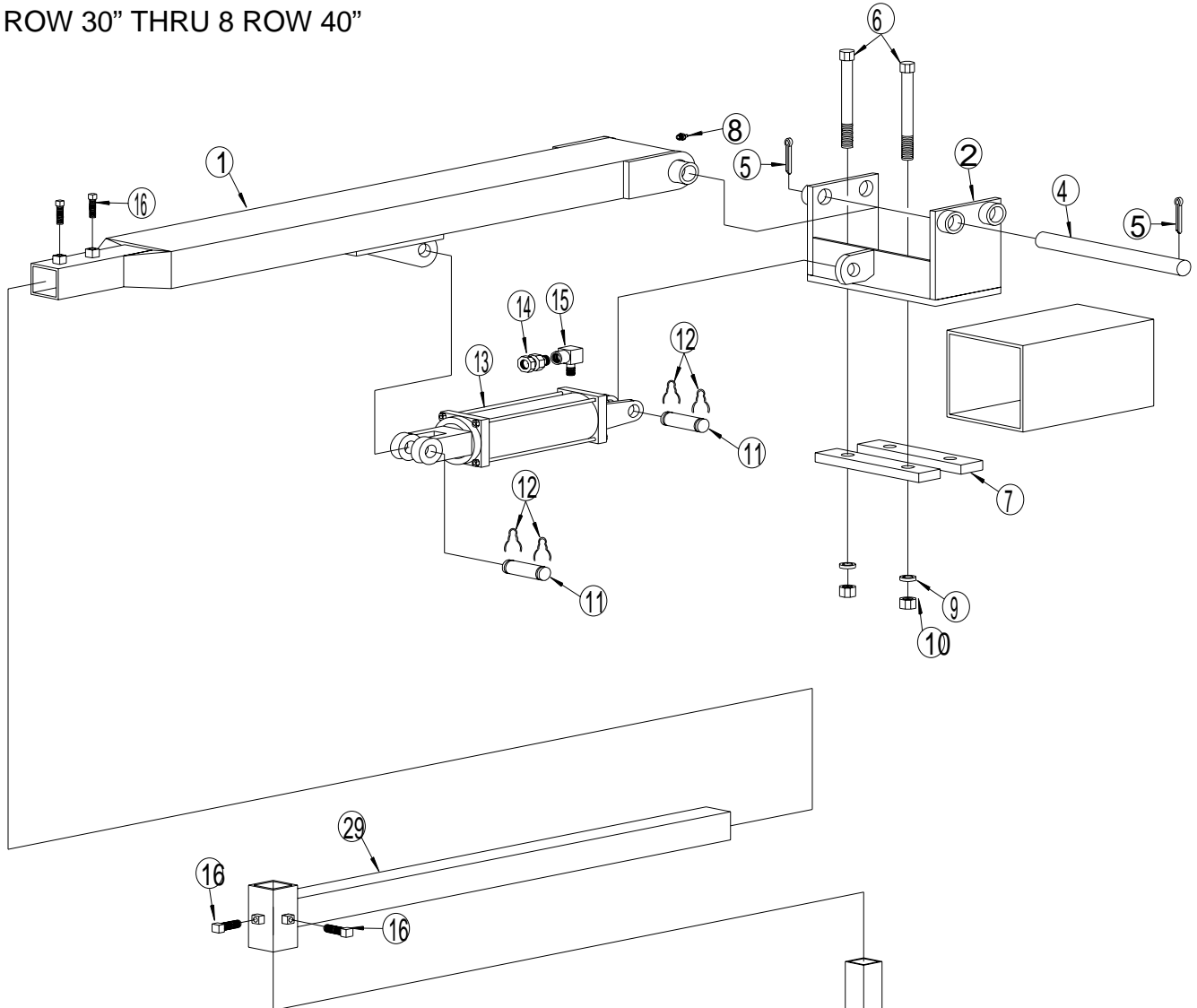
REF.	DESCRIPTION	PART NO.	REQ.	REF.	DESCRIPTION	PART NO.	REQ.
31	DISC SUPPORT RING	M1500	1	39	3/8" LOCK WASHER	FLW38	3
32	DISC PLATE	16-00612	1	40	3/8" HEX NUT	FHN38	3
33	12" DISC BLADE	16-001230	1	42	5/16 LOCK WASHER	FLW56	5
34	BEARING SPACER	16-00611	1	43	5/16" HEX NUT	FHN56	5
35	"O" RING	16-00613	1	46	3/4" LOCK WASHER	FLW34	1
36	BEARING	16-00610	2	47	3/4" JAM NUT	FJN34	1
37	DISC AXLE	16-00609	1	48	3/8" X 1-1/2" HEX BOLT	FHB38150G5	3
38	DISC HUB CASTING	16-00608	1	49	5/16" X 1-1/2" CARRIAGE	FCB56150G5	5

**FOR COMPLETE ASSEMBLY SEE PAGE 900-2 FIG A**

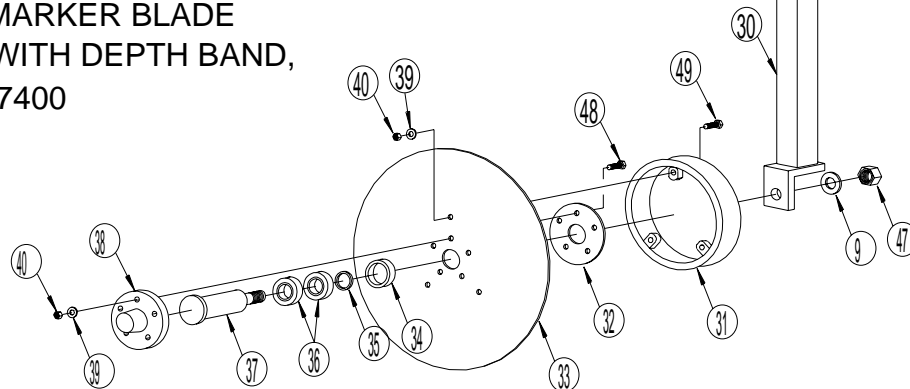
**M1500A - MARKER BLADE ASSEMBLY WITH DEPTH BAND**



**M4000 ROW MARKER SERIES- VERTICAL FOLDING FOR  
 4 ROW 30" THRU 8 ROW 40"**



**M1500A - MARKER BLADE  
 ASSEMBLY WITH DEPTH BAND,  
 WITHOUT M7400**



**ROW MARKER-HORIZONTAL FOLDING**

**M8000-ROW MARKER SERIES: TO ORDER A FULL SET YOU MUST ORDER TWO.**  
 PRICES IN PRICING GUIDE ARE LISTED FOR SINGLE UNITS.

- M8000-25 2-1/4" DIAMOND BAR
- M8000-47 4" & 7" SQUARE BAR
- M8000-50 5" SQUARE BAR
- M8000-60 6" SQUARE BAR

PLEASE SPECIFY TOOL BAR SIZE WHEN ORDERING ROW MARKERS FOR FLAT BAR.  
 STANDARD BAR SIZES ARE 5" X 7", 7" X 5", 4" X 4", & 7" X 7". OTHER SIZES MAY BE SPECIAL ORDERED.

**M8000 PARTS LIST**

REF.	DESCRIPTION	PART NO.	REQ.	REF.	DESCRIPTION	PART NO.	REQ.
1	UPPER EXT. ARM	M1900	1	12	3/8" X 2 " HEX BOLT GR.5	FHB38200G5	2
2	EXTENSION ARM 40"	M7300	1	13	3/8" X 1-1/2" HEX BOLT GR.5	FHB38150G5	2
*	EXTENSION ARM 60"	M7300E	1	15	3/8" NYLON LOCK NUT	FYHN38	4
*	EXTENSION ARM 80"	M7300EX	1	16	HYDRAULIC CYLINDER	308DB	1
4	PIVOT ARM BRACKET	M2101	1	17	HYDRAULIC RESTRICTOR	1404-08-08-R	1
5	CLAMPING BRACKET	M2000	1	18	HYDRAULIC ADAPTER	5502-8-8	1
6	ATTACHMENT STRAPS	M2001	2	20	7/8" x 6" HEX BOLT GR.5	FHB78600G5	4
7	CYLINDER PIVOT ROD	M7600C	2	*	7/8" X 9 HEX BOLT GR.5	FHB78900G5	4
8	GREASE FITTING	1610	2	21	7/8" HEX NUT	FHN78	4
9	CLAMP STRAP	M1996	1	22	7/8" FLAT WASHER	FFW78	4
10	CYLINDER PIN	10200	2	23	5/8" X 1-1/2" SQUARE HEAD SET SCREW	FSSHS58150	4
11	PIVOT ROD	M7600	2	30	MARKER STANDARD	M7400	1

**SUB ASSEMBLIES: SHOWN BELOW**

**M1500A-MARKER BLADE ASSEMBLY WITH DEPTH BAND**

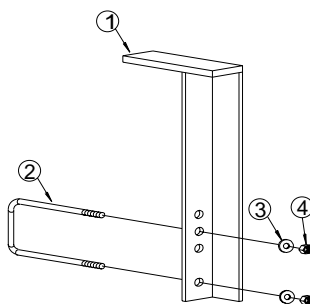
REF.	DESCRIPTION	PART NO.	REQ.	REF.	DESCRIPTION	PART NO.	REQ.
31	DISC SUPPORT RING	M1500	1	39	3/8" LOCK WASHER	FLW38	3
32	DISC PLATE	16-00612	1	40	3/8" HEX NUT	FHN38	3
33	12" DISC BLADE	16-001230	1	42	5/16" LOCK WASHER	FLW56	5
34	BEARING SPACER	16-00611	1	43	5/16" HEX NUT	FHN56	5
35	"O" RING	16-00613	1	46	3/4" LOCK WASHER	FLW34	1
36	BEARING	16-00610	2	47	3/4" JAM NUT	FJN34	1
37	DISC AXLE	16-00609	1	48	3/8" X 1-1/2" HEX BOLT	FHB38150G5	3
38	DISC HUB CASTING	16-00608	1	49	5/16" X 1-1/2" CARRIAGE	FCB56150G5	5

**FOR COMPLETE ASSEMBLY SEE PAGE 900-2 FIG A**

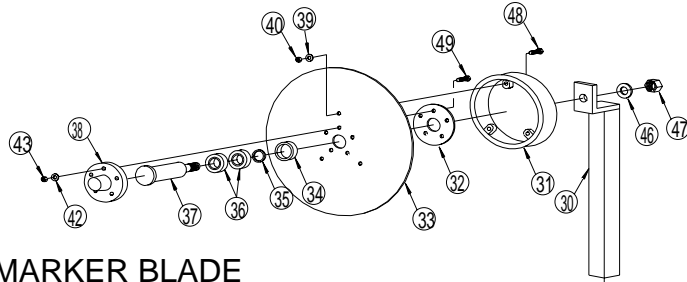
**M8057-ROW MARKER SUPPORT STAND**

REF.	DESCRIPTION	PART NO.	REQ.	REF.	DESCRIPTION	PART NO.	REQ.
1	SUPPORT STAND	M8057	1	3	7/8" HEX NUT	FHN78	2
2	U-BOLT 4" X 6"	FUB4060-78	1	4	7/8" FLAT WASHER	FLW78	2

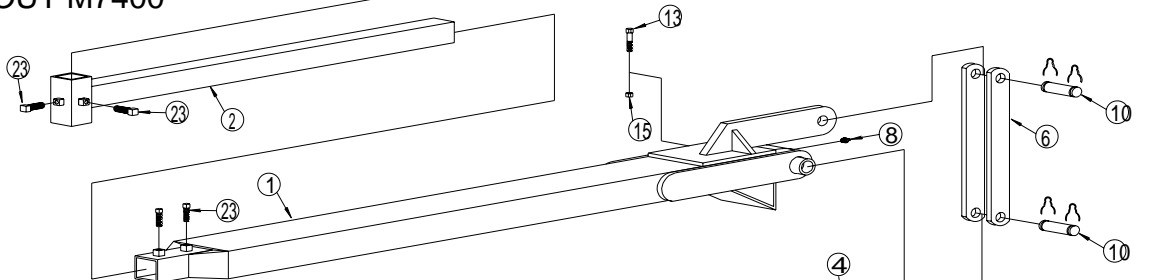
**M8057 - MARKER STAND**



**M8000 ROW MARKER SERIES - HORIZONTAL FOLDING FOR 4 ROW 40" THRU 10 ROW 32"**



**M1500A - MARKER BLADE ASSEMBLY WITH DEPTH BAND, WITHOUT M7400**



**M8057- MARKER STAND**

